

Warwickshire Education Strategy 2018 - 2023

VISION

- WE1**
Promoting the best possible start in life through early education
- WE2**
Unlocking talent, building resilience and fulfilling the potential of our vulnerable learners
- WE3**
Empowering education communities so that Warwickshire's Family of Schools can thrive and there are sufficient good/outstanding school places
- WE4**
Promoting employability that offers the best possible opportunities for all learners - so that the local economy can grow and young people can take on the responsibilities of adult life



Education Strategy Consultation

2018 - 2023



Warwickshire Education Strategy, Education and Learning

Saltisford Office Park
Ansell Way
Warwick
CV34 4UL

Tel: 01926 742588

email: educationstrategy@warwickshire.gov.uk

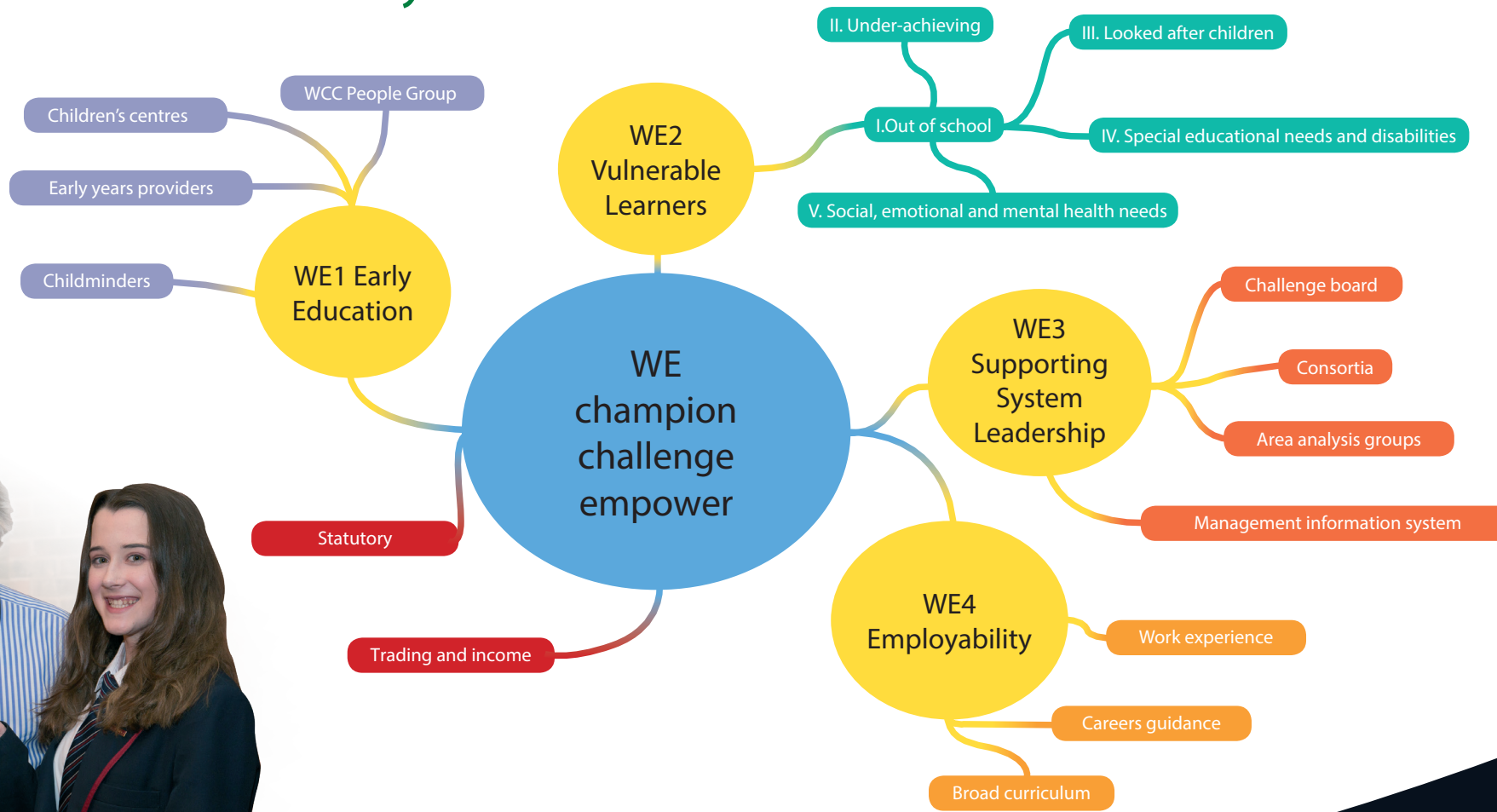
www.warwickshire.gov.uk/ask



Working in partnership so that a good education is available to everyone

Working in partnership so that a good education is available to everyone

Our new Education Strategy will guide and support education in Warwickshire for the next 5 years. It is very important to us that you have a say in what that strategy will be.



Please visit our questionnaire at www.warwickshire.gov.uk/ask to register your comments.

