



WARWICKSHIRE
FIRE & RESCUE SERVICE

NUNEATON & BEDWORTH

LOCAL RISK PROFILE

2020



Report produced by Business Intelligence

*Data in this profile relates to the two year time period
1st January 2018 to 31st December 2019*



Nuneaton & Bedworth Local Risk Profile 2020

Nuneaton & Bedworth Cluster Map

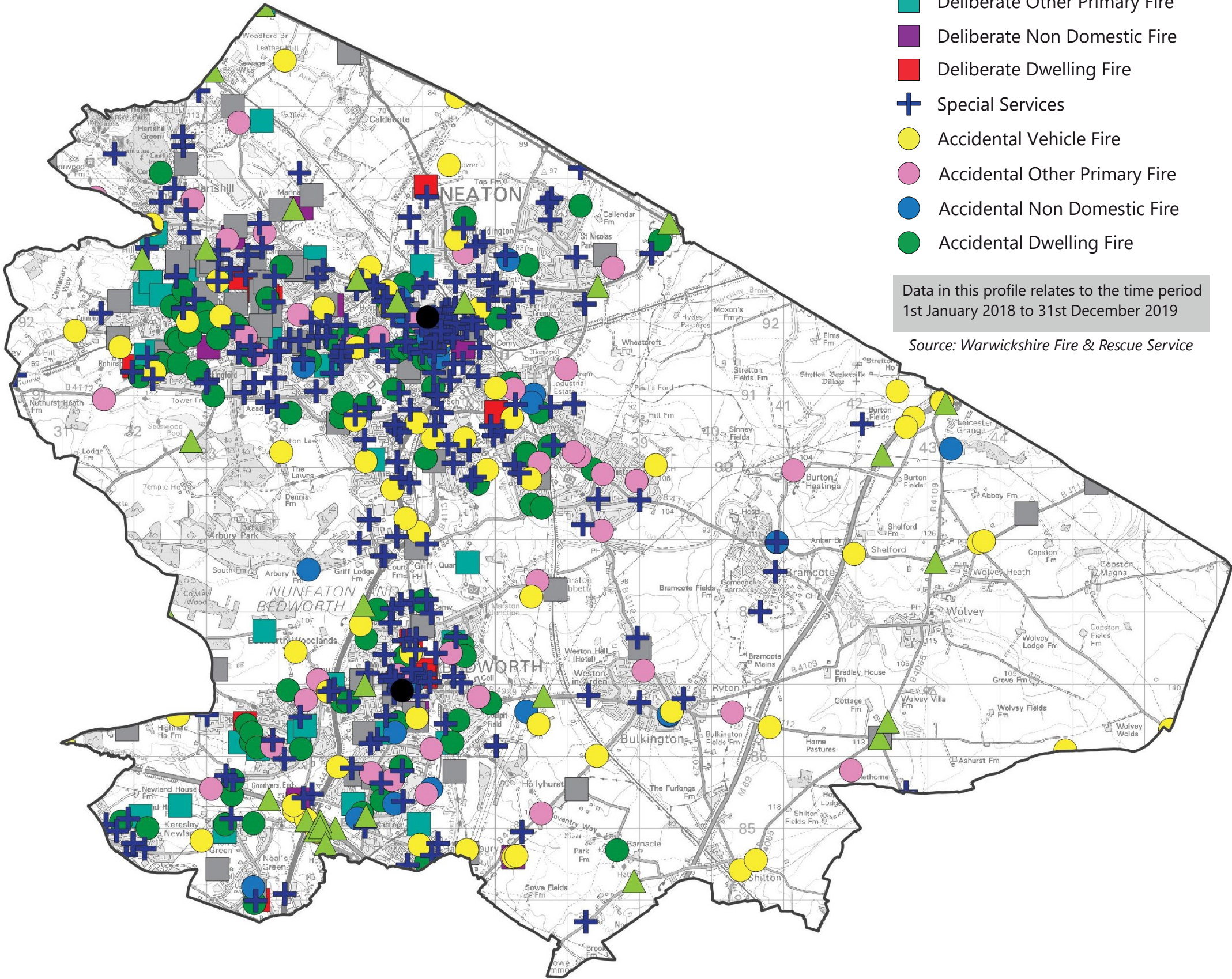


KEY

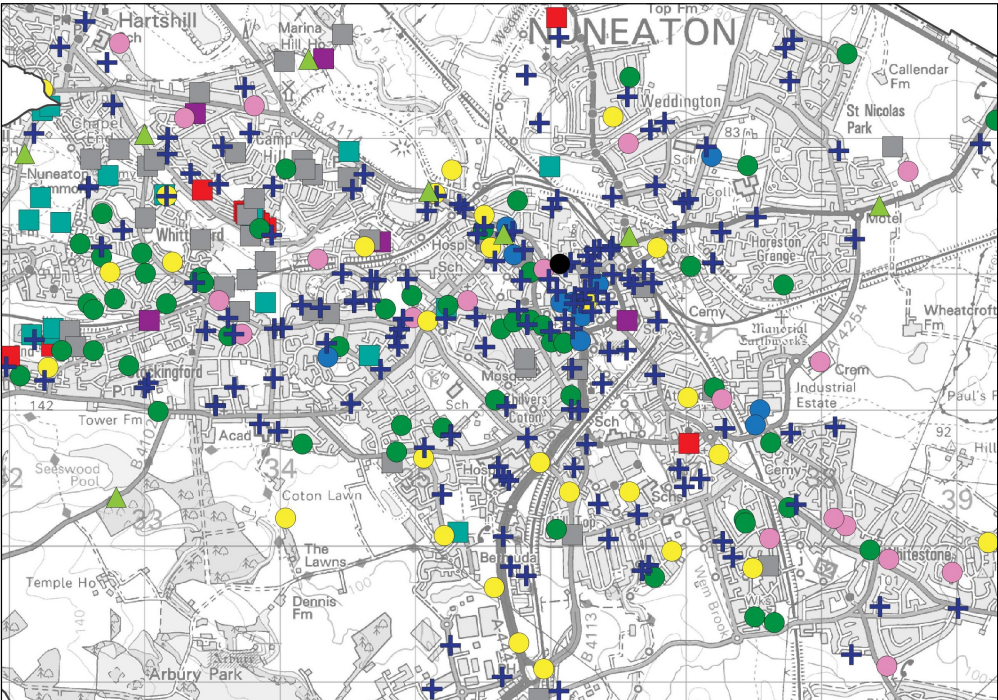
- Fire Station
- ▲ Road Traffic Collision - Extrication
- Deliberate Vehicle Fire
- Deliberate Other Primary Fire
- Deliberate Non Domestic Fire
- Deliberate Dwelling Fire
- + Special Services
- Accidental Vehicle Fire
- Accidental Other Primary Fire
- Accidental Non Domestic Fire
- Accidental Dwelling Fire

Data in this profile relates to the time period
1st January 2018 to 31st December 2019

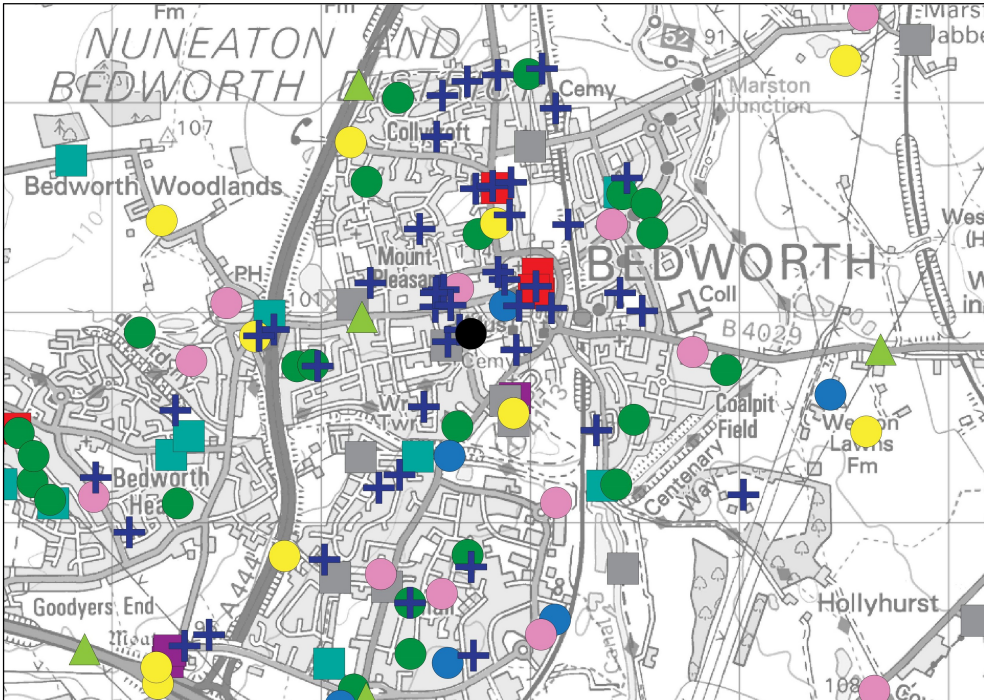
Source: Warwickshire Fire & Rescue Service



Nuneaton



Bedworth





Home Fires

108

Total Dwelling Fires

90 Accidental

18 Deliberate

Station Ground	No. of Incidents
Bedworth	39
Nuneaton	69

Key Cause



Cooking was the top cause of accidental dwelling fires

Key Times



23 accidental fires (26%) started between 17:00 and 22:00

Casualties



There were 19 casualties recorded as a result of dwelling fires

Alarm Systems



62 dwellings (61%) had an alarm system



Other Primary Fires

72

Total Other Primary Fires

39 Accidental

33 Deliberate

Station Ground	No. of Incidents
Bedworth	30
Nuneaton	42

Key Cause



11 accidental fires were caused by overheating

Casualties



There were 2 fire-related casualties recorded

Small Fires



In addition, 182 accidental small fires were attended

Key Times



49 small fires (21%) started between 18:00 and 21:00



Business Fires

34

Total Non Domestic Fires

23 Accidental

11 Deliberate

Station Ground	No. of Incidents
Bedworth	15
Nuneaton	19

Key Cause



Overheating was the top cause of accidental business fires

Key Times



15 business fires (44%) started between 09:00 and 17:00

Casualties



There were no casualties recorded as a result of business fires

Alarm Systems



38% of properties experiencing a business fire had an alarm



Vehicle Fires

129

Total Vehicle Fires

65 Accidental

63 Deliberate

Station Ground	No. of Incidents
Bedworth	41
Nuneaton	88

Key Cause



25 accidental vehicle fires were caused by overheating

Key Times



19% of vehicle fires occurred between 15:00 and 18:00

Casualties



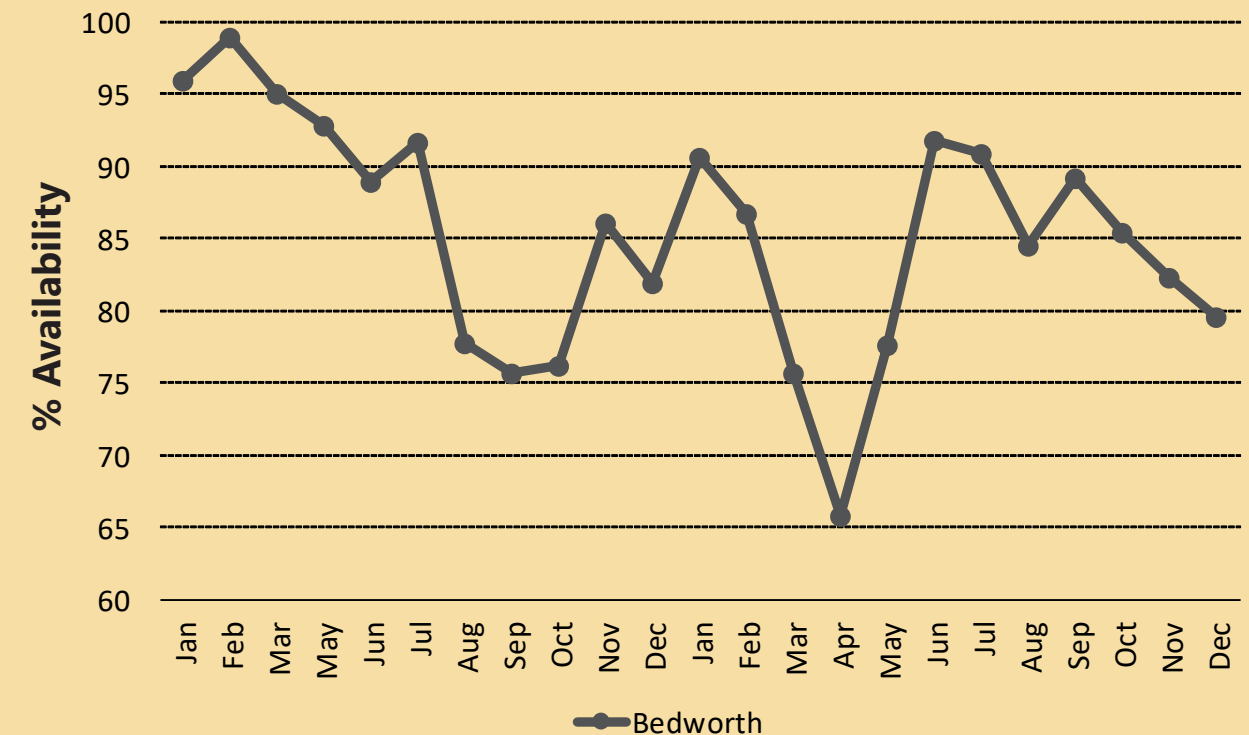
There were 2 casualties as a result of vehicle fires

Status



3 vehicle fires involved stolen vehicles

Post-Detachment Availability 2018-2019



*There is no data for April 2018 due to a system change

Seasonality Chart 2018-2019

	January	February	March	April	May	June	July	August	September	October	November	December
Accidental Dwelling Fires	6	4	3	8	7	11	14	4	13	6	7	7
Deliberate Dwelling Fires	2	1	0	0	0	2	2	3	2	1	4	1
Business Fires	2	4	2	2	6	6	2	2	3	2	2	1
Vehicle Fires	5	4	10	6	14	17	14	22	10	15	9	3
Other Primary Fires	5	1	2	8	7	7	19	8	8	0	3	4
Chimney Fires	3	1	0	0	0	0	0	0	1	1	1	0
Accidental Small Fires	4	7	6	6	6	9	27	7	7	4	4	0
Deliberate Small Fires	12	16	12	26	12	14	28	31	31	21	21	9
False Alarms	36	41	49	53	49	58	81	65	58	58	72	42
Road Traffic Collisions	11	6	4	6	15	6	14	10	17	6	6	8
Special Services	24	16	23	18	19	26	24	18	27	14	21	28

Source: Warwickshire Fire and Rescue Service



Report produced by Business Intelligence

Data in this profile relates to the time period
1st January 2018 to 31st December 2019

Images sourced from Flat Icon



Arson

359

Total Arson Incidents

	Station Ground	No. of Incidents
34 Deliberate Other Fires	Bedworth	131
233 Deliberate Small Fires	Nuneaton	228
11 Deliberate Business Fires		
18 Deliberate Dwelling Fires		
63 Deliberate Vehicle Fires		

Key Fire Type



Grassland, woodland and crops accounted for 28% (100) of all deliberate fires

Key Fire Type



Loose refuse (including in garden) accounted for 23% of deliberate fires



Road Traffic Collisions

109

Total RTCs

	Station Ground	No. of Incidents
27 Extrications	Bedworth	37
61 Other Services	Nuneaton	72
21 No Services		

Key Season



Summer accounted for 28% of all RTCs

Key Times



Peak RTC activity was between 15:00 and 19:00

Casualties



40 Total rescues
2 Rescue without injury
38 Rescue with injury
1 Fatality

Extrications

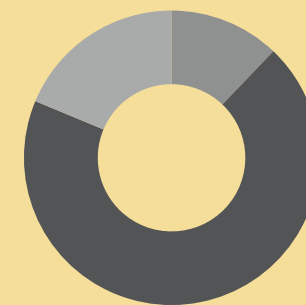


23 Extrication of person/s
4 Release of persons

Cluster Area Anti-Social Behaviour (ASB) Incidents 2018 and 2019

Total ASB	2018	2019	% Change	Direction
8047	4454	3593	-19.3%	↓

Distribution by type of incident 2018 and 2019



	ASB Nuisance	ASB Environmental	ASB Personal
Total Incidents	6003	740	1304
Proportion	74.6%	9.2%	16.2%

Total Road Traffic Collisions 2018 and 2019

	Total	2018	2019	Change (2018-2019)	Direction
	418	214	204	-4.7%	↓
Fatal	7	4	3	-1	↓
Serious Injury	102	51	51	0	↔
Slight Injury	309	159	150	-9	↓

Key Season



Peak RTC activity was in the Autumn

Key Date



18% of all RTCs occurred on a Friday

Key Times



Peak RTC activity was between 15:00 and 19:00



Special Services

258

Total Special Services Incidents

Station Ground	No. of Incidents
Bedworth	73
Nuneaton	185

Incident Types



50 incidents were to assist other agencies

Incident Types



39 incidents involved release of persons / other rescue

Incidents



36 incidents involved effecting entry / exit

Casualties



14 Rescued with injury
53 Rescued without injury
5 Fatalities



False Alarms

662

Total False Alarms

	Station Ground	No. of Incidents
368 False Alarm Good Intent	Bedworth	251
270 Automatic False Alarm	Nuneaton	411
24 False Alarm Malicious		

Location



93% of Automatic False Alarms were in residential properties/homes

Location



51% of False Alarms with Good Intent were at outdoor locations

Location



10% of False Alarms with Good Intent were vehicles

Location



13 Malicious False Alarms were at residential dwellings



Report produced by Business Intelligence

Data in this profile relates to the time period 1st January 2018 to 31st December 2019

Images sourced from Flat Icon

Deprivation

The Index of Multiple Deprivation (IMD) provides a way of measuring relative deprivation for small areas known as Lower Super Output Areas (LSOAs). LSOAs have an approximate population of 1,500 people and allow the identification of small pockets of deprivation that might otherwise be missed. There are 339 LSOAs in Warwickshire.

The IMD takes into account a range of measures including income, employment, education and health which are weighted and combined to produce an overall index score. The score is then used to rank each LSOA in England. A low rank denotes greater deprivation. A ranking of 1 represents the most deprived areas and a ranking of 32,844 represents the least deprived area nationally.

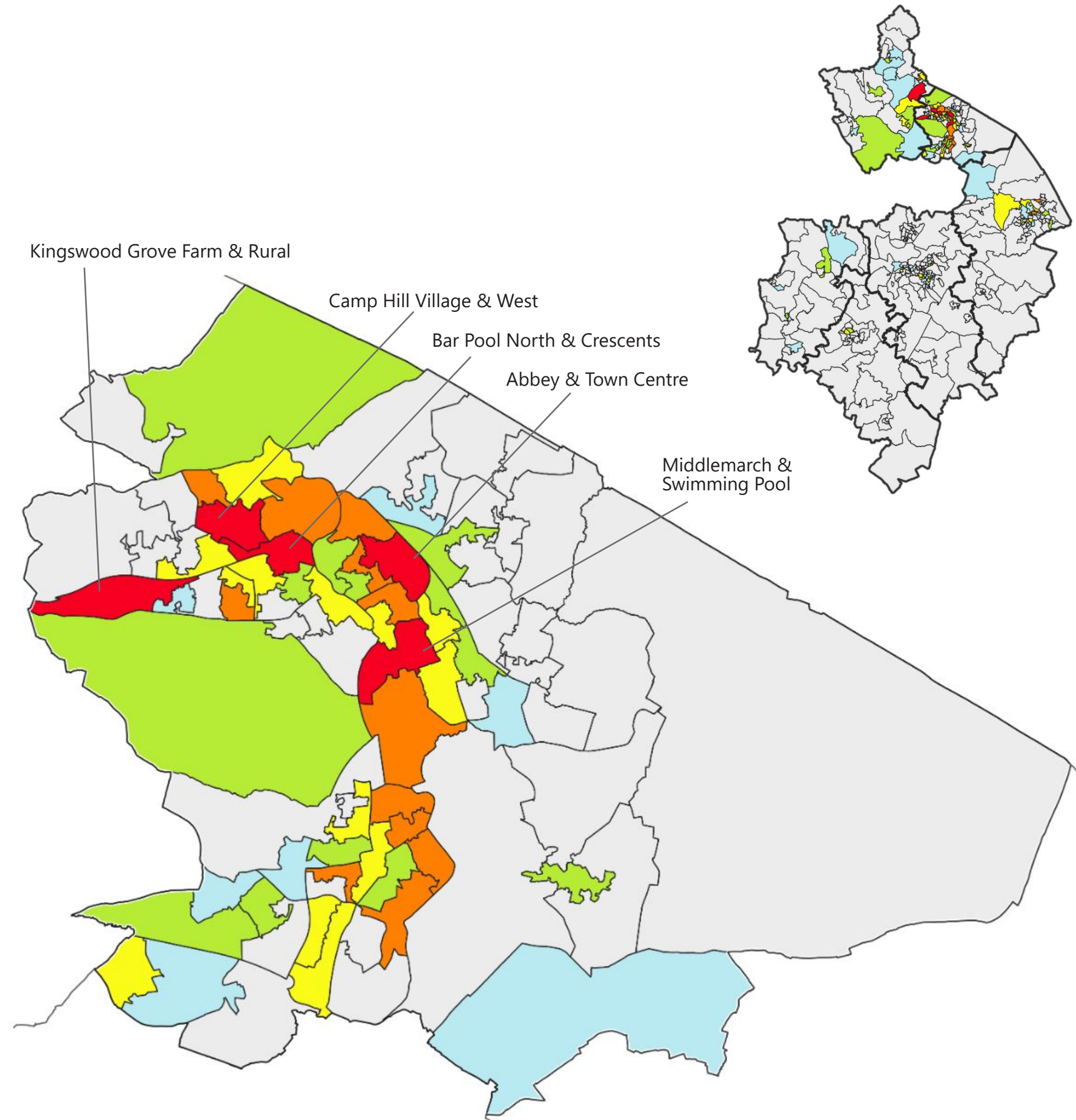
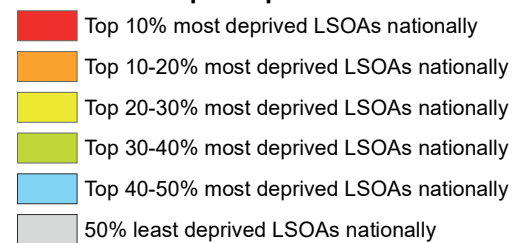
The map below highlights LSOAs in the county according to their 2019 IMD decile. Decile one, in red, includes all those LSOAs in the county which are in the 10% most deprived nationally, orange coloured LSOAs refer to those in the 10-20% most deprived nationally and so on as per the legend below.

Nuneaton and Bedworth has five LSOAs which are in the 10% most deprived nationally. These include: Kingswood Grove Farm & Rural, Camp Hill Village & West, Bar Pool North & Crescents, Abbey & Town Centre, and Middlemarch & Swimming Pool.

In addition to the above, a further twelve LSOAs are in the 10-20% most deprived nationally and thirteen LSOAs are in the 20-30% most deprived nationally.

The Nuneaton & Bedworth cluster experiences higher levels of deprivation when compared to other parts of the county, especially the south.

Index of Multiple Deprivation 2019



Source: Indices of Multiple Deprivation 2019

Nuneaton and Bedworth Local Risk Profile 2020

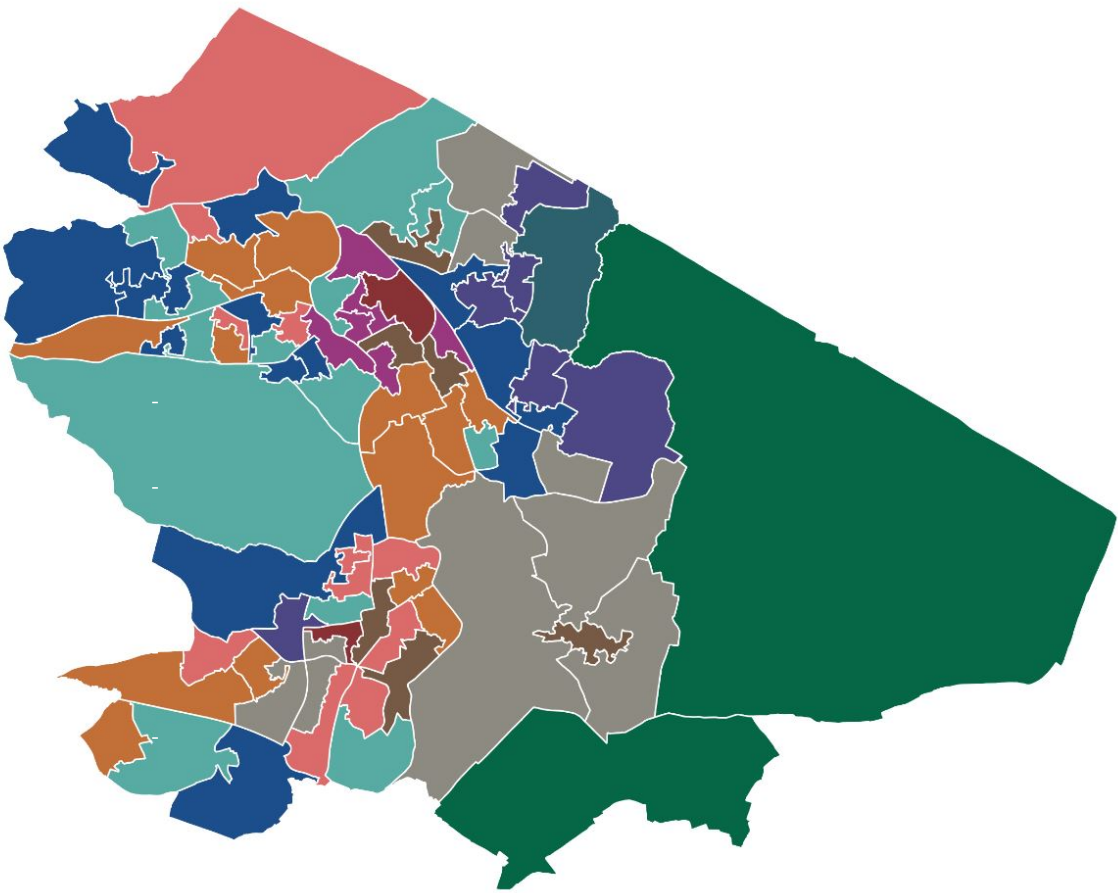
Mosaic is a tool for understanding household and customer types and is built from Experian’s UK Consumer Dynamics Database. Mosaic uses a wide range of data to allocate households into one of 15 Groups and 66 Types, based on likely common characteristics. Using Mosaic it is possible to help establish the different service needs that Warwickshire residents may have, help identify where specific service needs are located and understand each group’s preferred channels of communication.

Mosaic Group		Nuneaton & Bedworth	Warwickshire
Total all Groups		59,735	256,188
A	Country Living	1.1%	10.6%
B	Prestige Positions	5.1%	9.7%
C	City Prosperity	0.0%	0.8%
D	Domestic Success	6.2%	8.6%
E	Suburban Stability	12.8%	8.8%
F	Senior Security	10.9%	8.9%
G	Rural Reality	0.6%	7.6%
H	Aspiring Homemakers	14.2%	11.6%
I	Urban Cohesion	0.6%	1.5%
J	Rental Hubs	0.9%	6.1%
K	Modest Traditions	12.8%	5.8%
L	Transient Renters	9.4%	5.3%
M	Family Basics	13.1%	6.8%
N	Vintage Value	7.7%	5.5%
O	Municipal Tenants	4.6%	2.3%

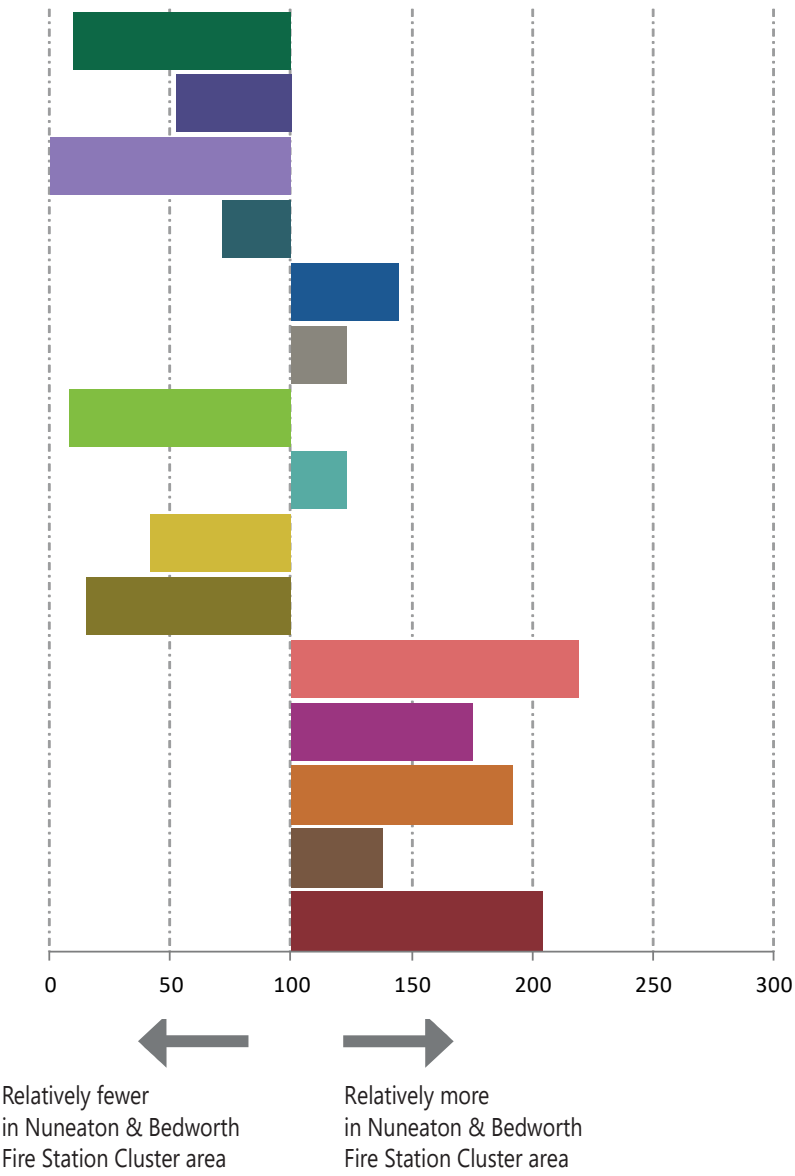
Index of 100 = same as Warwickshire percentage.
Above 100 reveals that higher levels of these groups are residing in the Nuneaton & Bedworth Fire Station cluster area, below 100 reveals that there are lower levels of these groups residing in this cluster area.

© Crown Copyright and database right 2020. Ordnance Survey 100019520.
Source: Mosaic Experian 2018, Business Intelligence

Of the 15 Mosaic groups, there are eight groups where, compared to the Warwickshire average, there are relatively higher levels living in the Nuneaton & Bedworth Fire Station cluster area (where the Index is more than 100).



The map shows the most prominent Mosaic group in each LSOA in the Nuneaton & Bedworth Fire Station cluster. Overall, the Mosaic group H 'Aspiring Homemakers' accounts for the largest proportion of households in this area (14.2%), and group C 'City Prosperity' accounts for the least (0.0%).



Analysis of 2018 and 2019 data has highlighted the Mosaic groups more at risk of Accidental Dwelling Fires.

The Mosaic groups more at risk of ADFs in the Nuneaton & Bedworth Fire Station cluster area are presented here. For Warwickshire as a whole, the Mosaic groups more at risk of ADFs were:



Key Features of Group L
-Private renters
-In their 20s and 30s
-Low length of residence
-Low cost housing
-Singles and sharers
-Lower level jobs

Channel Preferences
Mobile call
Text

Key Features of Group M
-Families with children
-Low cost homes
-Rent from social landlords
-Squeezed budgets
-Higher rates of unemployment

Channel Preferences
Text
Mobile call

Key Features of Group K
-Mature with adult children
-Affordable housing
-Homeowners
-Suburban locations
-Modest incomes
-Lower level jobs

Channel Preferences
Landline
Post



Report produced by Business Intelligence

Images sourced from Flat Icon