



**WARWICKSHIRE**  
FIRE & RESCUE SERVICE

# WARWICK

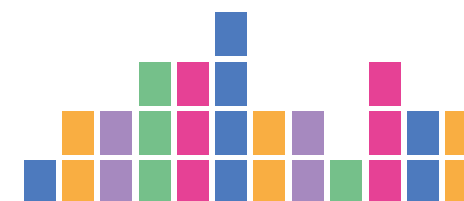
## LOCAL RISK PROFILE

### 2020



Report produced by Business Intelligence

*Data in this profile relates to the two year time period  
1st January 2018 to 31st December 2019*





Warwick Cluster Map



WARWICKSHIRE  
FIRE & RESCUE SERVICE

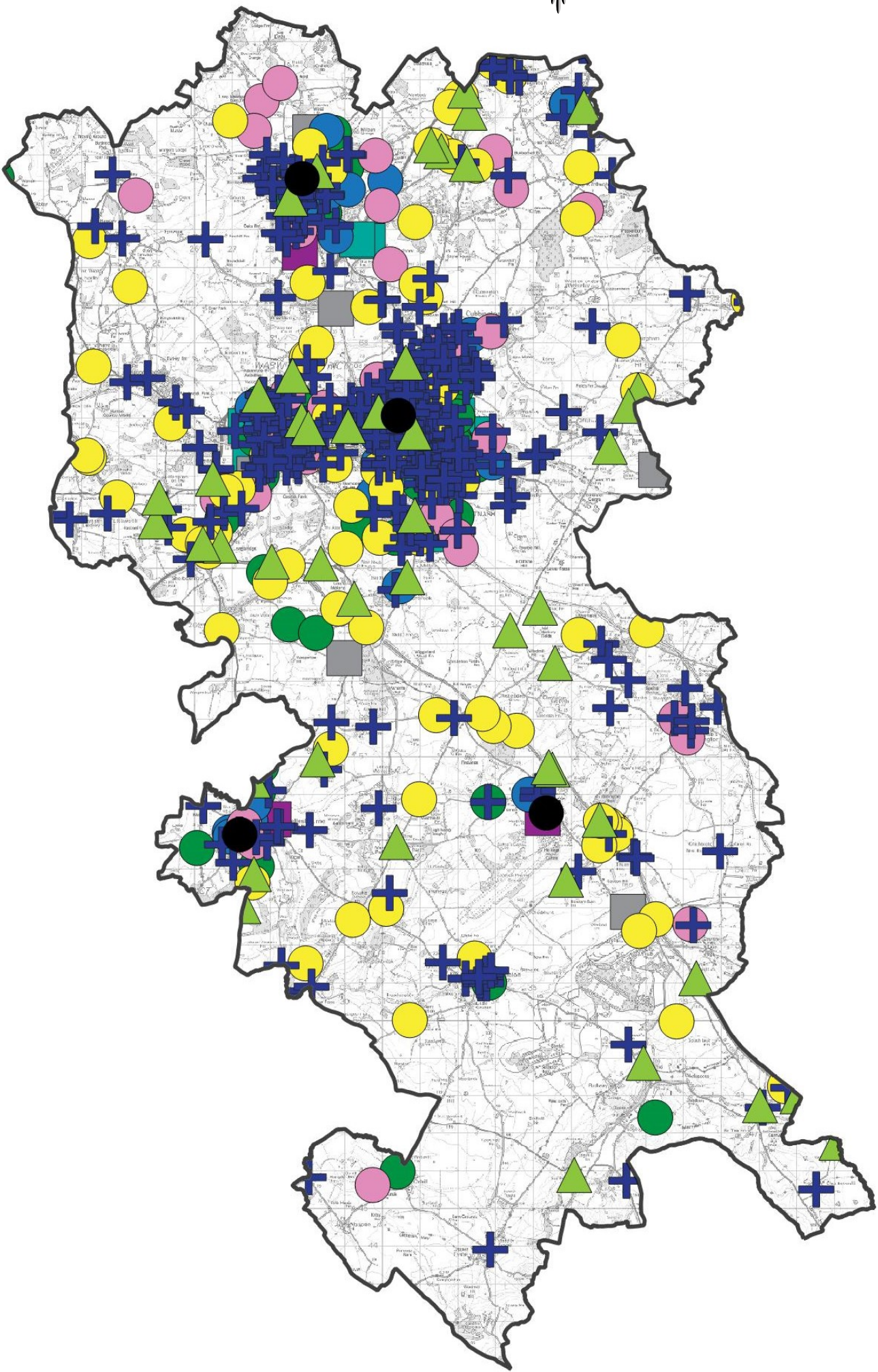


KEY

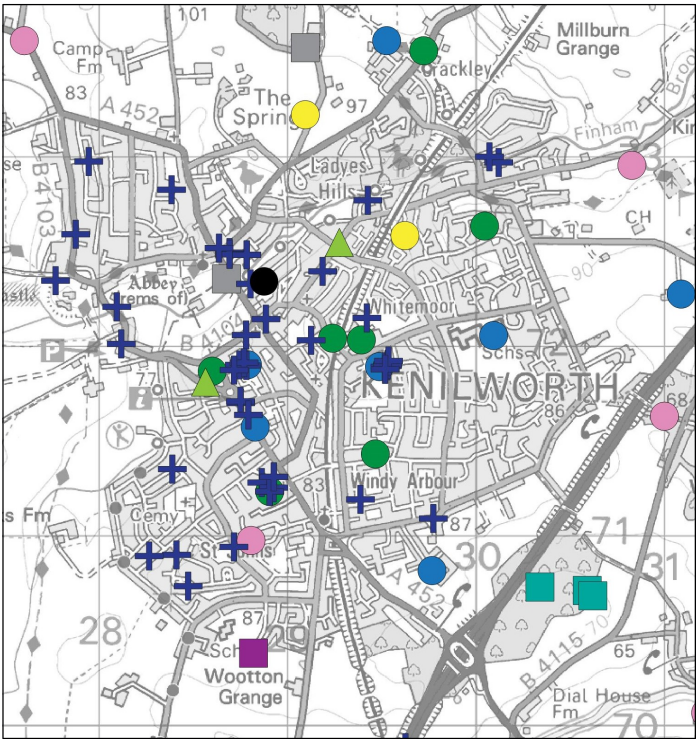
- Fire Station
- ▲ Road Traffic Collision - Extrication
- Deliberate Vehicle Fire
- Deliberate Other Primary Fire
- Deliberate Non Domestic Fire
- Deliberate Dwelling Fire
- + Special Services
- Accidental Vehicle Fire
- Accidental Other Primary Fire
- Accidental Non Domestic Fire
- Accidental Dwelling Fire

Data in this profile relates to the time period  
1st January 2018 to 31st December 2019

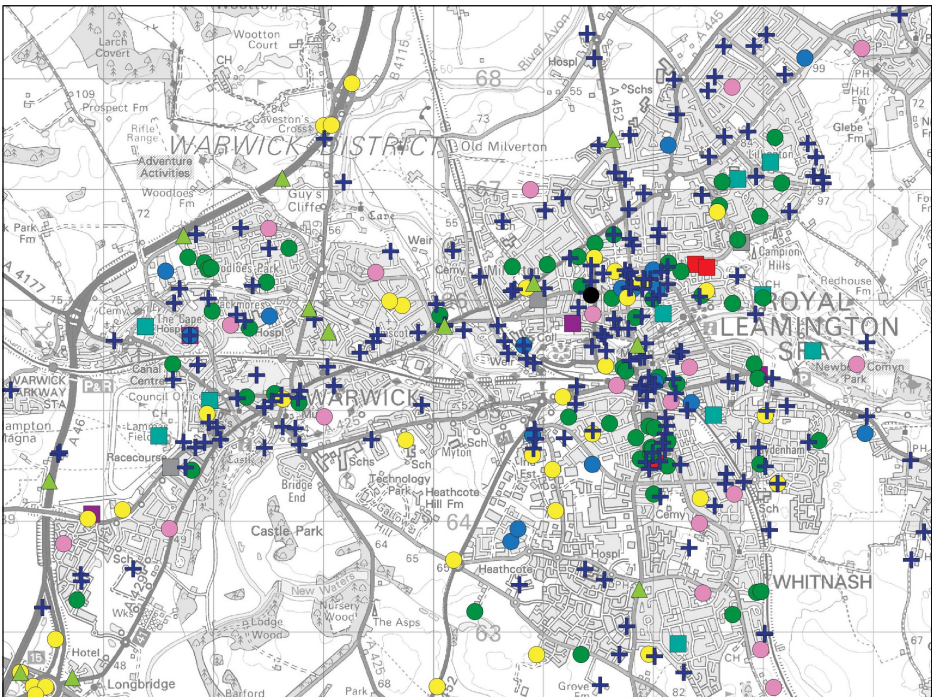
Source: Warwickshire Fire & Rescue Service



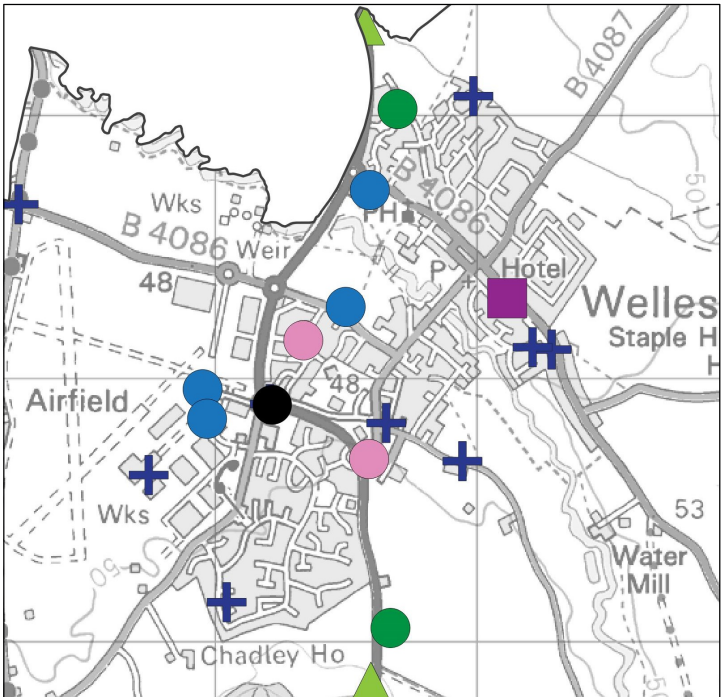
Kenilworth



Warwick & Leamington



Wellesbourne







## Home Fires

80

Total Dwelling Fires

77 Accidental

3 Deliberate

Station Ground	No. of Incidents
Gaydon	4
Kenilworth	7
Leamington	66
Wellesbourne	3

### Key Cause



Cooking was the top cause of accidental dwelling fires

### Key Times



29 accidental fires (38%) started between 15:00 and 19:00

### Casualties



There were 9 casualties recorded as a result of dwelling fires

### Alarm Systems



55 dwellings (69%) had an alarm system



## Other Primary Fires

52

Total Other Primary Fires

38 Accidental

14 Deliberate

Station Ground	No. of Incidents
Gaydon	4
Kenilworth	5
Leamington	40
Wellesbourne	2

### Key Cause



4 accidental fires were caused by overheating

### Casualties



There was one fire-related casualty recorded

### Small Fires



In addition, 186 accidental small fires were attended

### Key Times



53 small fires (28%) started between 15:00 and 18:00



## Business Fires

42

Total Non Domestic Fires

35 Accidental

7 Deliberate

Station Ground	No. of Incidents
Gaydon	2
Kenilworth	8
Leamington	27
Wellesbourne	5

### Key Cause



Fault in equipment or appliance was the top cause of accidental business fires

### Key Times



19 business fires (45%) started between 12:00 and 18:00

### Casualties



There was 1 casualty recorded as a result of business fires

### Alarm Systems



71% of properties experiencing a business fire had an alarm



## Vehicle Fires

109

Total Vehicle Fires

98 Accidental

11 Deliberate

Station Ground	No. of Incidents
Gaydon	12
Kenilworth	6
Leamington	5
Wellesbourne	5

### Key Cause



32 accidental vehicle fires were caused by overheating

### Key Times



27% of vehicle fires occurred between 15:00 and 21:00

### Casualties



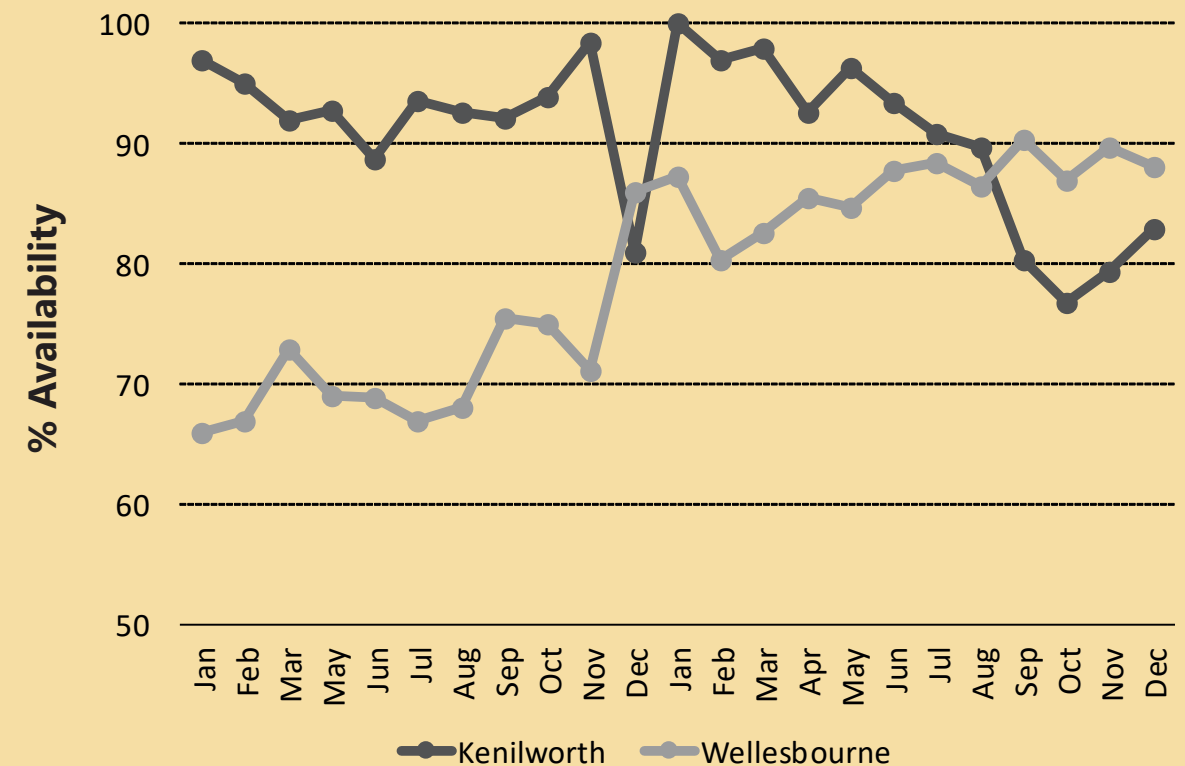
There were 3 casualties as a result of vehicle fires

### Status



7 vehicle fires involved abandoned vehicles

### Post-Detachment Availability 2018-2019



\*There is no data for April 2018 due to a system change

### Seasonality Chart 2018-2019

	January	February	March	April	May	June	July	August	September	October	November	December
Accidental Dwelling Fires	9	11	5	5	11	9	5	6	2	4	6	4
Deliberate Dwelling Fires	0	1	0	1	1	0	0	0	0	0	0	0
Business Fires	7	2	6	5	3	2	1	4	2	1	3	6
Vehicle Fires	9	5	9	5	7	8	13	11	9	15	11	7
Other Primary Fires	4	2	4	2	6	5	10	7	4	2	3	2
Chimney Fires	2	3	4	1	0	1	0	0	0	2	2	3
Accidental Small Fires	8	9	15	19	28	16	31	16	13	15	9	7
Deliberate Small Fires	8	3	5	10	9	7	11	12	9	5	1	3
False Alarms	70	63	83	76	84	77	82	81	81	87	74	78
Road Traffic Collisions	11	15	16	16	8	14	13	20	9	15	18	12
Special Services	25	21	51	28	38	28	30	26	21	25	42	27

Source: Warwickshire Fire and Rescue Service



Report produced by Business Intelligence

Data in this profile relates to the time period  
1st January 2018 to 31st December 2019

Images sourced from Flat Icon



## Arson

**117**

Total Arson Incidents

	Station Ground	No. of Incidents
14 Deliberate Other Fires	Gaydon	2
83 Deliberate Small Fires	Kenilworth	8
6 Deliberate Business Fires	Leamington	27
3 Deliberate Dwelling Fires	Wellesbourne	5
11 Deliberate Vehicle Fires		

### Key Fire Type



Grassland, woodland and crops accounted for 36% (9) of all deliberate fires

### Key Fire Type



24% of deliberate fires involved vehicles



## Road Traffic Collisions

**167**

Total RTCs

	Station Ground	No. of Incidents
46 Extrications	Gaydon	37
86 Other Services	Kenilworth	17
35 No Services	Leamington	100
	Wellesbourne	12

### Key Season



Summer accounted for 28% of all RTCs

### Key Times



Peak RTC activity was between 16:00 and 19:00

### Casualties



67 Total rescues  
5 Rescues without injury  
62 Rescues with injury  
4 Fatalities

### Extrications



26 Extrication of person/s  
3 Release of persons



## Special Services

**362**

Total Special Services Incidents

Station Ground	No. of Incidents
Gaydon	35
Kenilworth	51
Leamington	259
Warwick	2
Wellesbourne	15

### Incident Types



30 incidents were related to effecting entry / exit

### Incident Types



17 incidents involved assisting other agencies

### Incidents



39 incidents involved flooding

### Casualties



27 Rescued with injury  
60 Rescued without injury  
5 Fatalities



## False Alarms

**936**

Total False Alarms

	Station Ground	No. of Incidents
463 False Alarm Good Intent	Gaydon	51
459 Automatic False Alarm	Kenilworth	108
14 False Alarm Malicious	Leamington	738
	Warwick	4
	Wellesbourne	35

### Location



95% of Automatic False Alarms were in residential properties/homes

### Location



28% of False Alarms with Good Intent were at outdoor locations

### Location



18% of False Alarms with Good Intent were in vehicles

### Location

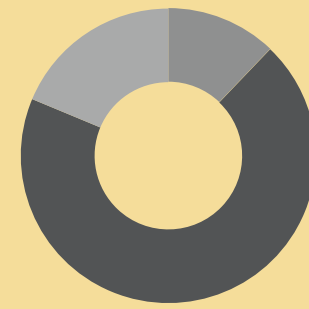


5 Malicious False Alarms were at flats / maisonettes

## Cluster Area Anti-Social Behaviour (ASB) Incidents 2018 and 2019

Total ASB	2018	2019	% Change	Direction
797	288	509	76.7%	↑

## Distribution by type of incident 2018 and 2019



	ASB Nuisance	ASB Environmental	ASB Personal
Total Incidents	605	75	117
Proportion	75.9%	9.4%	14.7%

## Total Road Traffic Collisions 2018 and 2019

	Total	2018	2019	Change (2018-2019)	Direction
	610	321	289	-10.0%	↓
Fatal	18	11	7	-4	↓
Serious Injury	128	79	49	-30	↓
Slight Injury	464	231	233	+2	↑

### Key Season



Peak RTC activity was in the Autumn

### Key Date



18% of all RTCs occurred on a Wednesday

### Key Times



Peak RTC activity was between 15:00 and 19:00



Report produced by Business Intelligence

Sources: Warwickshire Police,  
Warwickshire Road Safety Team WCC

Images sourced from Flat Icon



## Deprivation

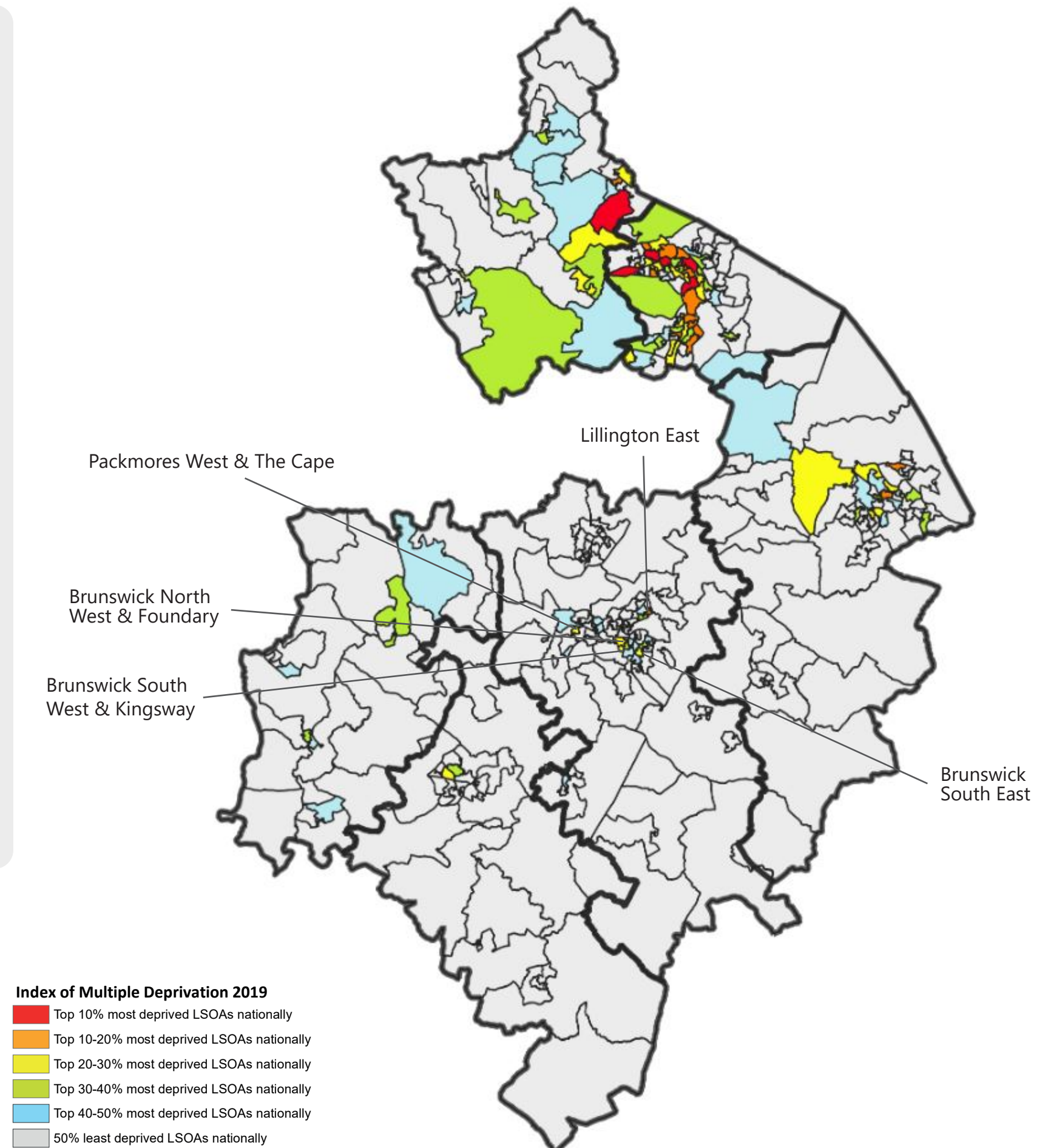
The Index of Multiple Deprivation (IMD) provides a way of measuring relative deprivation for small areas known as Lower Super Output Areas (LSOAs). LSOAs have an approximate population of 1,500 people and allow the identification of small pockets of deprivation that might otherwise be missed. There are 339 LSOAs in Warwickshire.

The IMD takes into account a range of measures including income, employment, education and health which are weighted and combined to produce an overall index score. The score is then used to rank each LSOA in England. A low rank denotes greater deprivation. A ranking of 1 represents the most deprived areas and a ranking of 32,844 represents the least deprived area nationally.

The map below highlights LSOAs in the county according to their 2019 IMD decile. Decile one, in red, includes all those LSOAs in the county which are in the 10% most deprived nationally, orange coloured LSOAs refer to those in the 10-20% most deprived nationally and so on as per the legend below.

Warwick has one LSOA, Lillington East, in the 10-20% most deprived nationally. A further four, highlighted on the map, are in the 20-30% most deprived nationally. These are: Brunswick South East, Packmores West & The Cape, Brunswick North West & Foundary, and Brunswick South West & Kingsway.

The Warwick cluster experiences lower levels of deprivation when compared to other parts of the county, especially the north.



Source: Indices of Multiple Deprivation 2019

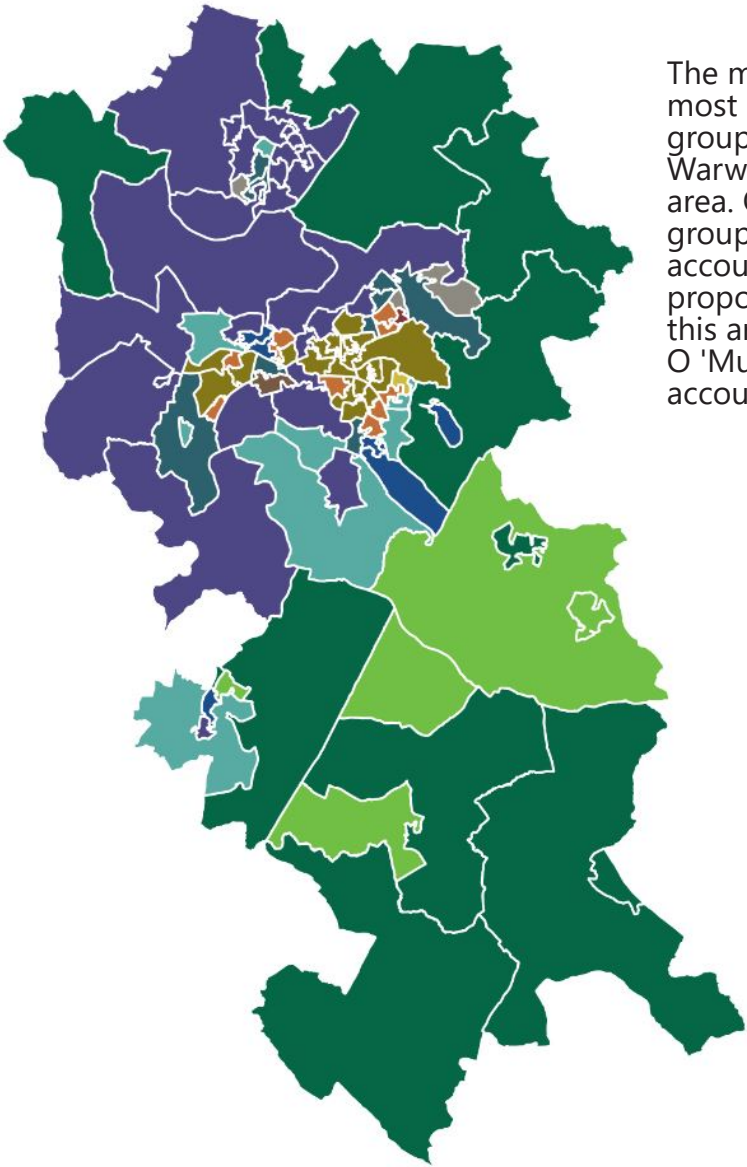
Mosaic is a tool for understanding household and customer types and is built from Experian’s UK Consumer Dynamics Database. Mosaic uses a wide range of data to allocate households into one of 15 Groups and 66 Types, based on likely common characteristics. Using Mosaic it is possible to help establish the different service needs that Warwickshire residents may have, help identify where specific service needs are located and understand each group’s preferred channels of communication.

Mosaic Group		Warwick	Warwickshire
Total all Groups		72,678	256,188
A	Country Living	7.8%	10.6%
B	Prestige Positions	15.3%	9.7%
C	City Prosperity	2.5%	0.8%
D	Domestic Success	11.8%	8.6%
E	Suburban Stability	6.2%	8.8%
F	Senior Security	8.1%	8.9%
G	Rural Reality	4.9%	7.6%
H	Aspiring Homemakers	10.3%	11.6%
I	Urban Cohesion	3.4%	1.5%
J	Rental Hubs	15.1%	6.1%
K	Modest Traditions	2.3%	5.8%
L	Transient Renters	1.5%	5.3%
M	Family Basics	4.8%	6.8%
N	Vintage Value	4.7%	5.5%
O	Municipal Tenants	1.4%	2.3%

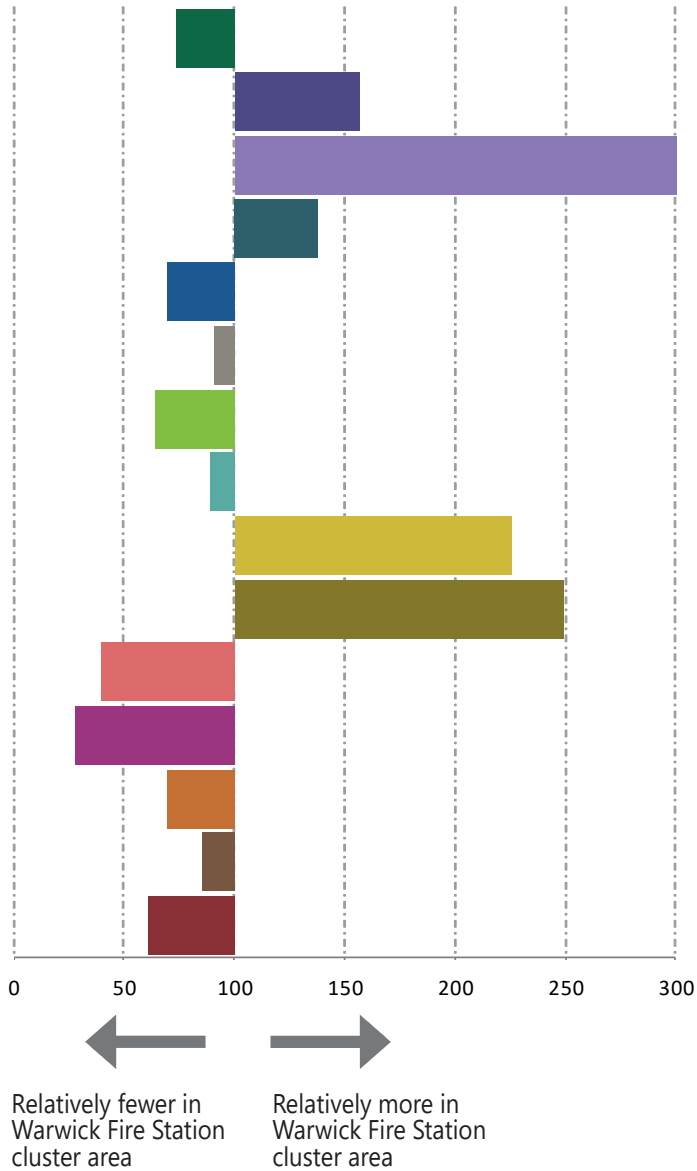
Index of 100 = same as Warwickshire percentage.  
Above 100 reveals that higher levels of these groups are residing in the Warwick Fire Station cluster area, below 100 reveals that there are lower levels of these groups residing in this cluster area.

© Crown Copyright and database right 2019. Ordnance Survey 100019520.  
Source: Mosaic Experian 2018, Business Intelligence

Of the 15 Mosaic groups, there are five groups where, compared to the Warwickshire average, there are relatively higher levels living in the Warwick Fire Station cluster area (where the Index is more than 100).



The map above shows the most prominent Mosaic group in each LSOA in the Warwick Fire Station cluster area. Overall, the Mosaic group B 'Prestige Positions' accounts for the largest proportion of households in this area (15.3%), and group O 'Municipal Tenants' accounts for the least (1.4%).



Analysis of 2018 and 2019 data has highlighted the Mosaic groups more at risk of Accidental Dwelling Fires.

The Mosaic groups more at risk of ADFs in the Warwick Fire Station cluster area are presented here. For Warwickshire as a whole, the Mosaic groups more at risk of ADFs were:



**Key Features of Group J**

- Aged 18-35
- Private renting
- Singles and sharers
- Urban locations
- Young neighbourhoods
- High use of smartphones

**Channel Preferences**

Text

Mobile call

**Key Features of Group M**

- Families with children
- Low cost homes
- Rent from social landlords
- Squeezed budgets
- Higher rates of unemployment

**Channel Preferences**

Text

Mobile call

**Key Features of Group O**

- Social renters
- Low cost housing
- Challenged neighbourhoods
- Few employment options
- Low income

**Channel Preferences**

Mobile call

Landline

